

TV-HIFI, SEP 19, 2020,

Jannis Zell (Stuttgart, 1992) is a multi-disciplinary artist and designer based in Karlsruhe, Germany. Zell is particularly interested in parafiction, skeuomorphism, and the imitation of objects and their surfaces, playing with expectations and the perception towards objects.

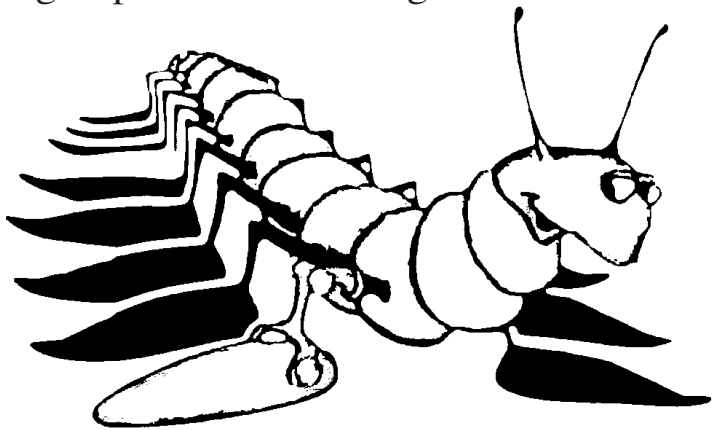
Past exhibitions:
"Neueröffnung",
Judith Milz

Location:
TV-HIFI
Schützenstraße 37
76137 Karlsruhe

Contact:
www.tv-hifi.net
info@tv-hifi.net

“The longer you
look at the rock,
the sooner you
realize you are
the rock”,

TV-HIFI opens monthly as a bar and an art exhibition. Each situatively developed exhibition leaves one in-situ piece in the space, so that with each opening of the bar, the number of contributors grows: a group exhibition emerges.



Thanks to:

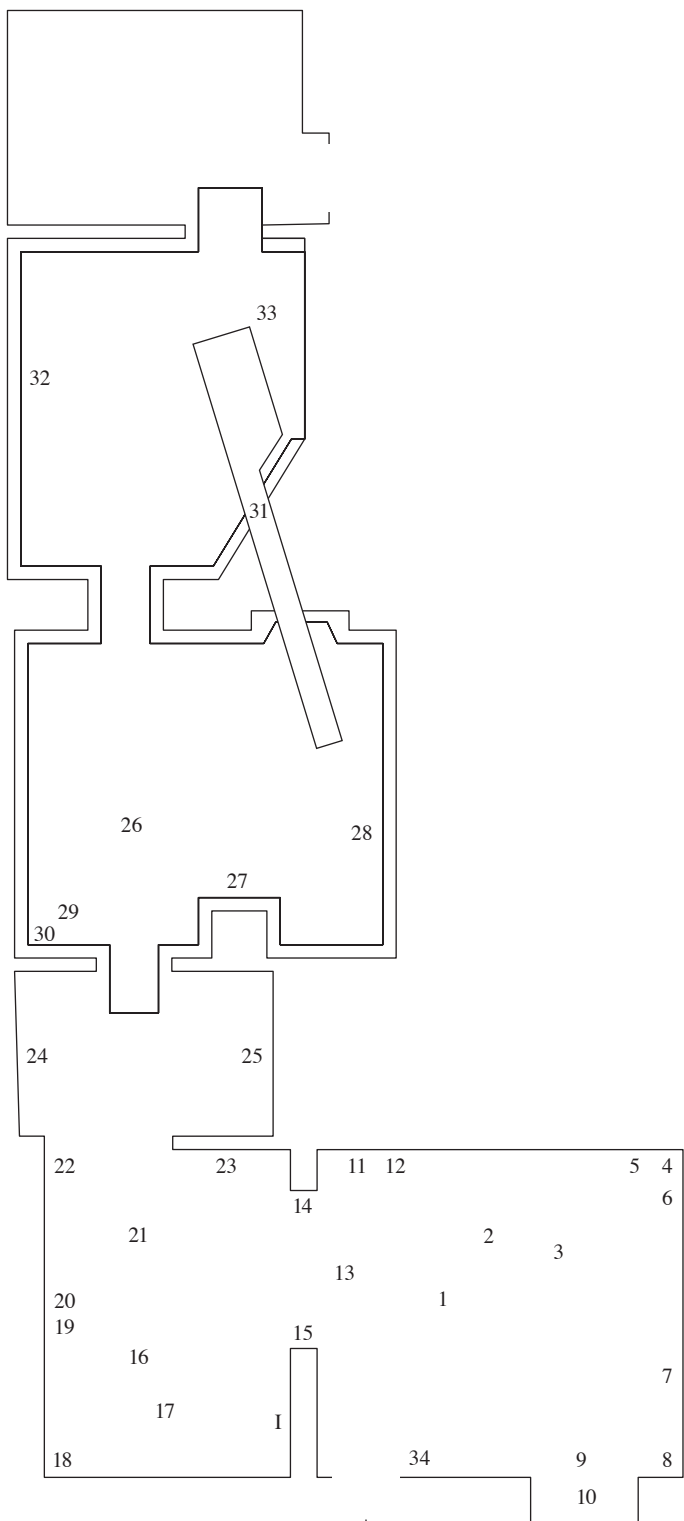


The artist thanks:

Lisa Ertel,
Christa Ertel,
Judith Milz,
Clemens Lauer,
Phil Zumbruch,
Moritz Appich

Open until further notice on demand
(+49 151 2218 5050)

Jannis Zell,
(Judith Milz),
3PM, Schützen 37.



- | | | | | |
|----|--|------|--|--|
| 1 | Blob-Heel Size 47 | 2020 | | |
| 2 | Hantel 5 Kilo | 2020 | | |
| 3 | Cenotaph to the Bees | 2019 | | |
| 4 | Corner Stone No.6
(Well of True Belief) | 2020 | | |
| 5 | Spider Web Cast
in Aluminum 1 | 2020 | | |
| 6 | Spider Web Cast
in Aluminum 2 | 2020 | | |
| 7 | Primitive Hut in the Dark | 2020 | | |
| 8 | Corner Stone No.22
(Well of True Belief) | 2020 | | |
| 9 | Beefsteak Tomato
on Dune Stool | 2020 | | |
| 10 | Pebble Plateau 1 | 2020 | | |
| 11 | Boxwood Leaving
the Front Yard | 2020 | | |
| 12 | Monument to the Boxwood | 2020 | | |
| 13 | Facade Stool Karl | 2020 | | |
| 14 | Speaker Stone No. 18
(Well of True Belief) | 2020 | | |
| 15 | Speaker Stone No. 19
(Well of True Belief) | 2020 | | |
| 16 | Pebble Plateau 2 | 2020 | | |
| 17 | Hideout Pebble 2 | 2020 | | |
| 18 | Corner Stone No.5
(Well of True Belief) | 2020 | | |
| 19 | Reformatting Rocks | 2020 | | |
| 20 | Unkraut | 2020 | | |
| 21 | Soft Neck Roll Mathy | 2020 | | |
| 22 | Corner Stone No.23
(Well of True Belief) | 2020 | | |
| 23 | Elevated Pile of Rocks
over Big Leaf | 2020 | | |
| 24 | Three Elevated Plums | 2020 | | |
| 25 | A Bunch of Elevated Grapes | 2020 | | |
| 26 | Chicken Nugget Monolith | 2019 | | |
| 27 | Silicone Sculpture
in the Dark | 2019 | | |
| 28 | Sticky Bouquet | 2019 | | |
| 29 | Hantel 25 Kilo | 2020 | | |
| 30 | Corner Stone No. 17
(Well of True Belief) | 2020 | | |
| 31 | Corner Stone No. 18
(Well of True Belief) | 2020 | | |
| 32 | Melting Window | 2020 | | |
| 33 | Burning Plastic Sculpture | 2020 | | |
| 34 | Just in Time (In-Situ) | 2020 | | |
| I | Laying the foundation
stone (permanent),
Judith Milz | 2020 | | |

Exhibition plan